



Opening Hercules Buffer files of type .CSV files or .TXT in Microsoft Excel may alter the contents of the Frame ID and Frame Acronym columns.

Excel misinterprets any Frame ID or Acronym with an "E" in it as scientific notation rather than text.

Example	
Hercules Buffer Frame ID Value	Excel Frame ID Column Value
1E9	1.00E+09
0000E048	1.00E+00
0E9	1.00E+00
1032E080	1.03E+83

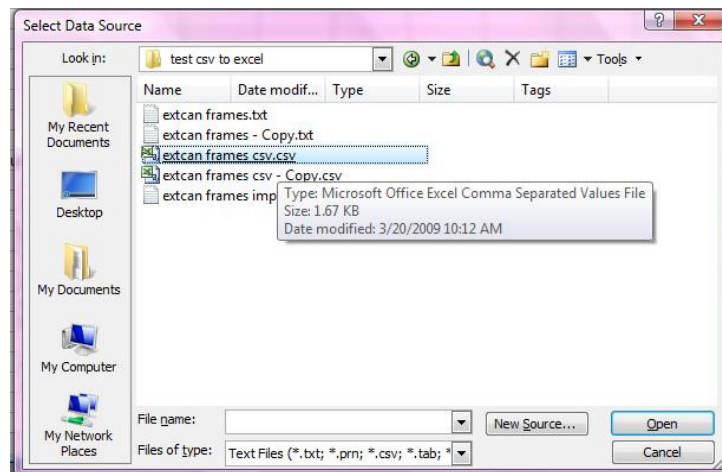
	A	B	C	D	E	F	G	H
1	Dearborn Group Format x15							
2								
3	Mon Mar 23 10:19:43 2009							
4								
5	Mon Mar 23 10:19:49 2009							
6								
7	4							
8	Trigger Frame							
9	Absolute							
10	Timestamp	Channel	Frame ID	Frame Acronym	Protocol	DataCount	Data	Tx/Rx
11	00:00:01:831:810	1	1.00E+09	1.00E+09	CAN - STD	3	00 00 00	Tx
12	00:00:02:742:570	1	0.00E+00	0.00E+00	CAN - EXT	2	00 00	Tx
13	00:00:03:694:190	1	293983	293983	CAN - EXT	2	00 00	Tx
14	00:00:04:495:680	1	0.00E+00	0.00E+00	CAN - STD	2	00 00	Tx

Opening a .txt file in Excel will automatically bring up the Text Import Wizard which allows the user to define the delimiters and change the format type of specific columns. Following the Solution steps using the Import Wizard will change the contents of the Frame ID and Frame Acronym columns to the correct values. Begin with Step #4 of the Solution.

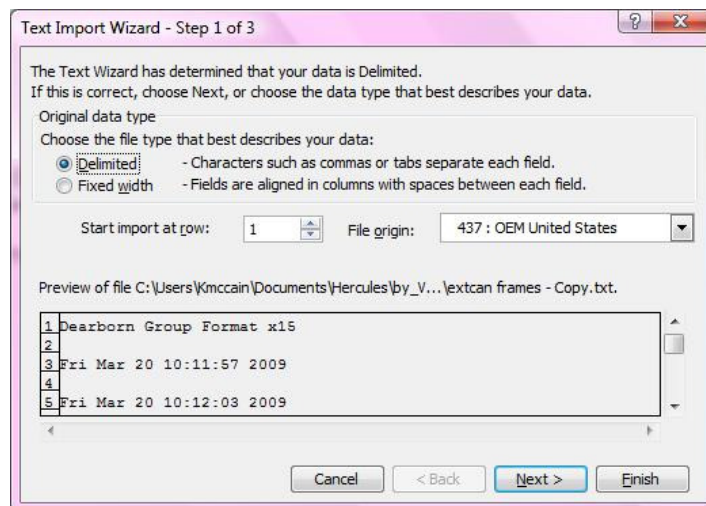
Opening a *.csv file will cause the .csv file to open in Excel with possibly invalid Frame ID and Frame Acronym depending on the value of those fields. These fields will have to be changed following the Solution steps beginning with step #1 Select Data.

Solution: Change the Frame ID and Frame Acronym columns from a general format to a text format. This will change back to the correct values.

1. Select Data
2. Select Import External Data
3. Select Import Data. This produces the Import Wizard - Select Data Source window.

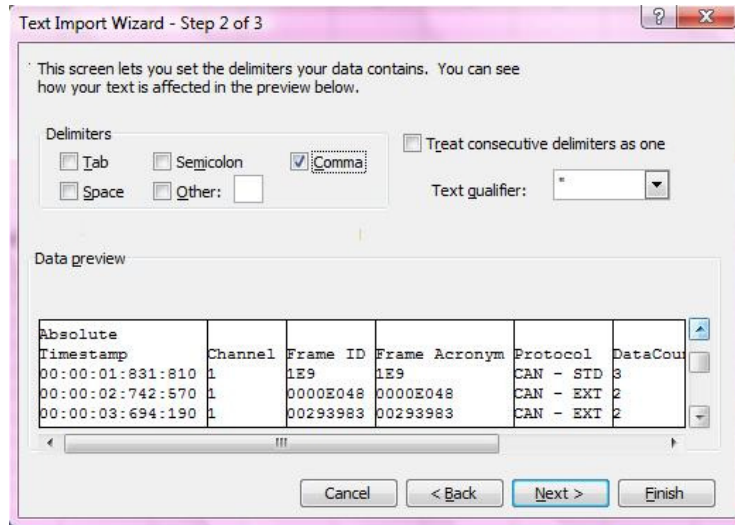


4. Select the drop down box of the Files of Type selection box. Select one with .txt or .csv. Click on the file to be opened. This will produce the Text Import Wizard Step 1 of 3.

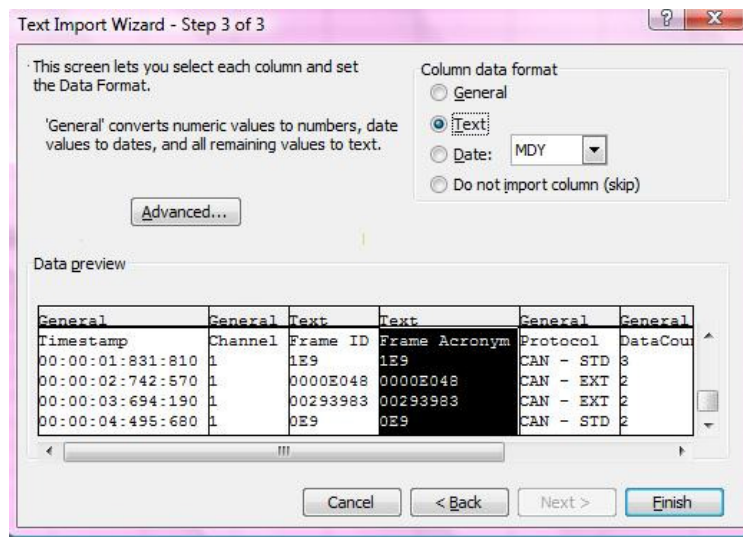


5. Select Delimited start at row 1.

- Click on the next button. This will produce the Text Import Wizard Step 2 of 3.



- Define the delimiter boxes. For *.CSV files only a check in the Comma box is required. For *.TXT files a check is required in the Comma box and in the Other box with a [.] period defined.
- Click the Next button. This produces the Text Import Wizard - Step 3 of 3 window.



- Click to highlight the 3rd and 4th column.
- Change the column data format from General to Text.
- Click the finish button. This produces the Import Data window. It is recommended that a New worksheet is selected in this window.
- Click the OK button to populate the spreadsheet in Excel.