



Dearborn Protocol Adapter 4 Plus (DPA 4 Plus)

Installation and User Manual (DG121032)

Driver Version:	5.59
Firmware Version DPA 4 Plus:	60.013
Firmware Version DPA 4:	37.150
Firmware Version DPA RF:	37.150
Firmware Version DPA III Plus (HW 5.00):	63.014
Native Drivers Version:	10.04



Permission is granted to copy any or all portions of this manual, provided that such copies are for use with the DPA product and that "© 2011 Dearborn Group, Inc", (herein referred to as "Dearborn Group", "DG Technologies" or "DG"), remains on all copies.

The accompanying software, provided for use with the DPA 4 Plus, is also copyrighted. Permission is granted to copy this software for back-up purposes only.

IMPORTANT

To ensure your success with this product, it is essential that you read this document carefully before using the hardware. Damage caused by misuse of the hardware is not covered under product warranty.

When using this manual, please remember the following:

- ❑ This manual may be changed, in whole or in part, without notice.
- ❑ DG assumes no responsibility for any damage resulting from the use of this hardware and software.
- ❑ Specifications presented herein are provided for illustration purposes only and may not accurately represent the latest revisions of hardware, software or cabling.
- ❑ No license is granted, by implication or otherwise, for any patents or other rights of DG Technologies or of any third party.

The "DG" square logo is a registered trademark of Dearborn Group, Inc. Other products that may be referenced in this manual are trademarks of their respective manufacturers.

The DPA Product line has been awarded the following U.S. Patents:

Patent #	Date	Patent Overview
6,772,248	08-03-04	Protocol adapter for in-vehicle networks.
7,152,133	12-19-06	Expanded functionality protocol adapter for in-vehicle networks.
7,337,245	02-26-08	Protocol adapter for passing diagnostic messages between vehicle networks and a host computer.
7,725,630	05-25-10	Protocol adapter for passing diagnostic messages between a host computer and vehicle networks operating in a J1939 or J1708 protocol.

DG Technologies
33604 West Eight Mile Road
Farmington Hills, MI 48335
Phone (248) 888-2000
Fax (248) 888-9977
www.dgtech.com
sales@dgtech.com
techsupp@dgtech.com

Table of Contents

Table of Contents	3
1. Safety First	5
2. Introducing the DPA 4 Plus	6
2.1. OEM Software Compatibility	6
2.2. Standards and Protocols Supported	7
2.3. Single-Application versus Multi-Application Drivers	7
2.4. Other Dearborn Protocol Adapters Supported by DG121032	8
2.5. System Requirements for the DG121032 Driver Set	8
3. Getting Started with the DPA (Steps 1-4 of 6)	9
3.1. Driver Installation	9
3.2. Connect USB Cable to the DPA and Then to PC	11
3.3. Connect Vehicle-Side Cable to the DPA	11
3.4. Connect Vehicle-Side Cable to the Vehicle	11
4. Finalize PC Install (Step 5 of 6)	12
4.1. Step 5. Finalize PC Install (Windows 2000/XP)	12
4.2. Step 5. Finalize PC Install (Vista and Windows 7)	13
5. Automatic Firmware Update (Step 6 of 6)	17
5.1. DPA RF Automatic Firmware Upgrade	17
6. Setting Up Your OEM Applications to Use the DPA 4 Plus	18
6.1. Notes on Selecting an RP1210 Compliant Adapter	18
6.2. Allison DOC	18
6.3. Bendix ABS Diagnostics	18
6.4. Caterpillar Electronic Technician	19
6.5. Cummins Insite	19
6.6. Detroit Diesel Diagnostic Link V7	19
6.7. Eaton ServiceRanger 3.x	19
6.8. Freightliner ServiceLink	20
6.9. International Truck and Engine	20
6.10. Meritor-WABCO ABS Toolbox	20
6.11. Volvo/Mack VCADS Pro	21
6.12. Volvo/Mack Premium Tech Tool (PTT)	21
7. Troubleshooting/Validating Your DPA Using Adapter Validation Tool (AVT)	22
7.1. Connection-Related Issues	22
7.2. Not Seeing DPA 4 Plus in OEM Application VDA Selection List	25
7.3. USB-Related Issues	25
8. Modifying DPA Settings – DPA Options Program	26
8.1. DPA Options And DPA Driver “Sets”	26
8.2. Set Options For DPA Device/API	27
8.3. J1939 Fast Transport Layer (FAST_TRANSPORT Option)	27
8.4. Debug Logging Level (RP1210B INI Option “DebugLevel”)	27
8.5. Debug File Name (RP1210B INI Option “DebugFile”)	27
8.6. Debug File Size (RP1210B INI Option “DebugFileSize”)	28
8.7. Debug File Mode (RP1210B INI Option “DebugMode”)	28
8.8. Automatic Firmware Update	28
8.9. DPA 5 Bluetooth Configuration Utility	29
9. DG Update – Program Overview	30
9.1. DG Driver Update – Internet Connection Required	30
9.2. DG Driver Update – Initial Screen	30
9.1. DG Driver Update – Main Update Screen	31
10. Product Specifications	34
10.1. DPA 4 Plus Physical and Electrical	34
10.2. DPA 4 Plus Pinouts	34
11. Warranty Information and Limitation Statements	35
11.1. Warranty Information	35
11.2. Limitation Statements	35
12. Technical Support and Return Merchandise Authorization (RMA)	36
12.1. Technical Support	36

12.2.	Return Merchandise Authorization (RMA)	36
13.	Appendix A – Manually Updating DPA Firmware.....	37
13.1.	Launch the DPA Flash Updater Program	38
14.	Appendix B – Software Developer/Integrator Notes	39
14.1.	Bundling the DPA with Your OEM Installation – Silent Install	39
14.2.	Native Driver Device IDs Match RP1210 Device IDs	40
15.	Appendix C - Windows Vista and Windows 7 Support Notes	41
15.1.	UAC and the TMC RP1210 Standard.....	41
15.2.	UAC and the Dearborn Group Adapter Validation Tool (AVT)	41
15.3.	UAC and the DPA Options Program	41
15.4.	UAC Requirements for All DPA Utility Programs.....	41
15.5.	More Information on UAC	41

1. Safety First

It is essential that the user read this document carefully before using the hardware.

The DPA 4 Plus device is to be used by those trained in the troubleshooting and diagnostics of light-duty through heavy-duty vehicles. The user is assumed to have a very good understanding of the electronic systems contained on the vehicles and the potential hazards related to working in a shop-floor environment.

DG Technologies understands that there are numerous safety hazards that cannot be foreseen, so we recommend that the user read and follow all safety messages in this manual, on all of your shop equipment, from your vehicle manuals, as well as internal shop documents and operating procedures.



- ❑ Always block drive, steer, and trailer wheels both front and back when testing.
- ❑ Use extreme caution when working around electricity. When diagnosing any vehicle, there is the risk of electric shock both from battery-level voltage, vehicle voltages, and from building voltage.
- ❑ Do not smoke or allow sparks or open flames near any part of the vehicle fueling system or vehicle batteries.
- ❑ Always work in an adequately ventilated area, and route vehicle exhaust outdoors.
- ❑ Do not use this product in an environment where fuel, fuel vapor, exhaust fumes, or other potentially hazardous liquids, solids, or gas/vapors could collect and/or possibly ignite, such as in an unventilated area or other confined space, including below-ground areas.

2. Introducing the DPA 4 Plus

The DPA 4 Plus product is used to connect vehicle and equipment communication networks and personal computers (PCs). This allows programs written for the PC to retrieve pertinent information such as fault codes, component information, as well as perform vehicle and component level diagnostics.



The DPA 4 Plus

2.1. OEM Software Compatibility

The adapter you have purchased is provided with a Technology and Maintenance Council (TMC) RP1210A-compliant interface and has been validated against the following OEM and component applications:

- | | |
|--|---|
| <input type="checkbox"/> Allison DOC™ | <input type="checkbox"/> International® Diamond Logic Builder |
| <input type="checkbox"/> Bendix® ACOM | <input type="checkbox"/> International® InTune |
| <input type="checkbox"/> Caterpillar® Electronic Technician | <input type="checkbox"/> International® Master Diagnostics |
| <input type="checkbox"/> Cummins® Insite™ | <input type="checkbox"/> International® ServiceAdvisor Fleet |
| <input type="checkbox"/> Cummins PowerSpec™ | <input type="checkbox"/> International® ServiceMaxx |
| <input type="checkbox"/> Dana Diagnostic Tool™ | <input type="checkbox"/> Mack and Volvo VCADS/PTT |
| <input type="checkbox"/> Detroit Diesel Diagnostic Link™ | <input type="checkbox"/> Meritor-WABCO Toolbox |
| <input type="checkbox"/> Detroit Diesel Reprogramming Station™ | <input type="checkbox"/> Vansco VMMS |
| <input type="checkbox"/> Eaton ServiceRanger | <input type="checkbox"/> ZF-Meritor TransSoft |
| <input type="checkbox"/> Freightliner ServiceLink | |

Any application claiming RP1210A-compliance should work if the application and adapter both support the same protocol(s) and operating system(s).

2.2. Standards and Protocols Supported

The adapter you have purchased provides more protocol and standards support than any other commercially available diagnostic adapter.

2.2.1. Operating Systems and Standards Supported

- ❑ Operating Systems
 - Windows 2000®
 - Windows XP®
 - Windows Vista® 32-bit and 64-bit Versions
 - Windows 7® 32-bit and 64-bit Versions
- ❑ TMC RP1210A
- ❑ CE Certification
- ❑ J1979
- ❑ Vehicle Electronic Programming Station (VEPS) J2214/J2461

2.2.2. RP1210 Defined Protocols Supported

- ❑ J1939
- ❑ CAN (ISO11898) – Single CAN Channel
- ❑ CAN@500k/J2284/GMLAN – Single CAN Channel
 - Supported under the “IESCAN” protocol name.
- ❑ J1708/J1587
- ❑ J1850 GM (Class 2)

2.2.3. Additional Protocols Supported by Native Drivers

- ❑ J2411 (GM SWCAN)
- ❑ ALDL

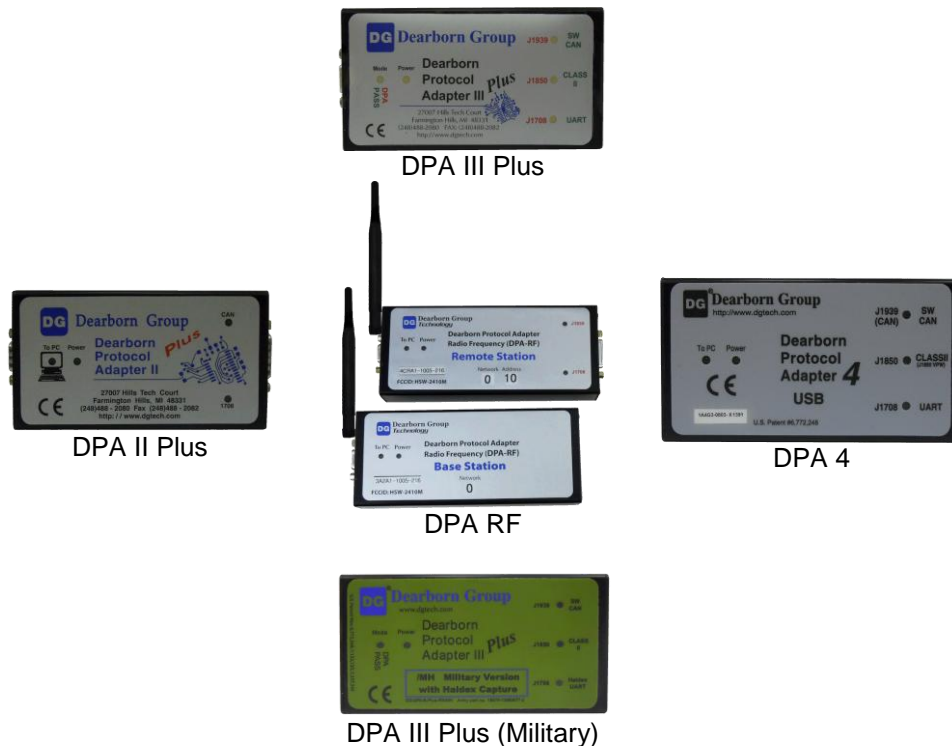
2.3. Single-Application versus Multi-Application Drivers

This release of the DPA 4 Plus (DG121032) does not support multiple OEM applications running simultaneously. It has been DG's experience that when several OEM applications are running simultaneously, especially on a crowded J1939 data bus, they sometimes miss critical timing events and messages. As a result applications do not behave as they would normally. Also, OEM applications are generally not tested with other OEM applications running at the same time.

- ✚ To support multiple OEM applications running simultaneously on the DPA 4 Plus, a future release will include multi-application drivers and will be named **DPA4PMA** and the single OEM application driver (also in that release) will be named **DPA4PSA**. The DPA4P release will support the DPA 4 Plus product only, so all prior adapters will be supported only through DG121032 in a “Single Application” mode.

2.4. Other Dearborn Protocol Adapters Supported by DG121032

In addition to the DPA 4 Plus, the DG121032 release supports multiple DPA variants from the past including the DPA II and DPA III series, DPA RF, and the DPA 4. This release also supports the US Army variants of the DPA up to the DPA 4 Plus /MH.



2.5. System Requirements for the DG121032 Driver Set

If you are not familiar with selecting a PC platform for your diagnostic applications, DG Technologies recommends starting with a computer that is compatible with the latest version of the TMC RP1208 (PC Selection Guidelines for Service Tool Applications).

In addition to the aforementioned document, the following items are recommended or required.

Item	Requirement
PC	IBM-Compatible
Processor	1GHz or Faster
RAM	256MB (512MB Preferred)
USB Port	USB Version 1.1 or Higher
Operating System	Windows 2000 Windows XP Windows Vista (32-bit or 64-bit) Windows 7 (32-bit or 64-bit)

3. Getting Started with the DPA (Steps 1-4 of 6)

If you ordered the DPA 4 Plus as part of a kit, it should include the following items:

- ✓ Rugged Plastic Carrying Case
- ✓ DPA 4 Plus Diagnostic Tool
- ✓ 6-pin/9-pin Deutsch Connector “Y” Cable, for vehicle-side connection
 - The cable supports one CAN channel
- ✓ USB Cable with screw-in “ears” to secure the cable to the DPA 4 Plus case
- ✓ Driver Installation CD
- ✓ Printed Quick Start Sheet

DG Technologies does customize our kits for some customers, so what you receive may vary.

3.1. Driver Installation

Attention!

- ✓ Install DPA 4 Plus drivers before connecting DPA to your PC.
- ✓ To install drivers you must be logged into the administrator account or have administrator privileges.
- ✓ If you run into problems installing the drivers or the DPA, please do not hesitate to contact technical support at (248) 888-2000.

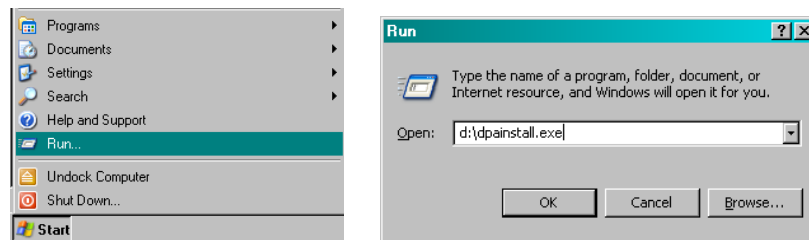
Attention!

DPA drivers are provided on the Installation CD and are installed by inserting the disc into your PC's CD-ROM drive. The latest drivers are also available at <http://www.dgtech.com/download.php>.

If you have any questions about the install, do not hesitate to call our Technical Support department.

If setup does not begin automatically, use the following sequence (for Windows XP or 2000):

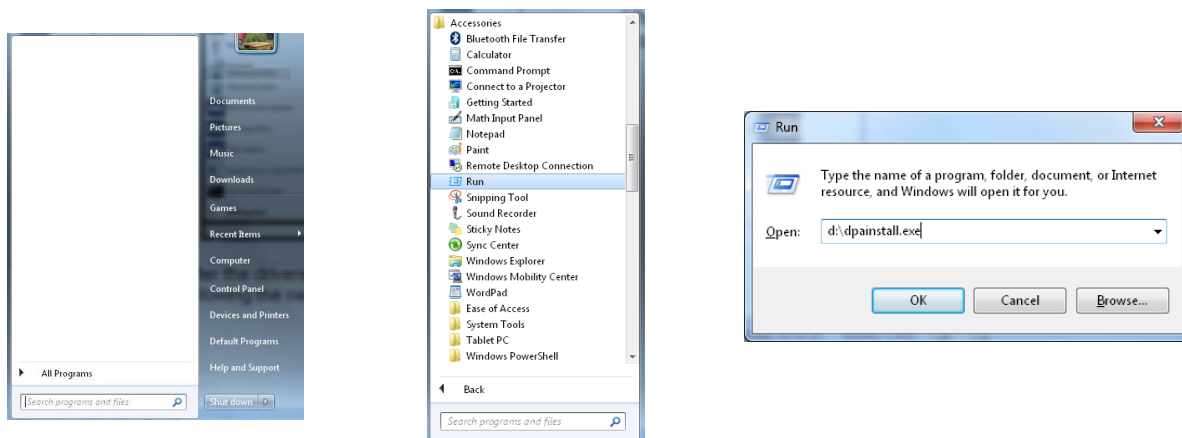
Start → Run → [CD_Drive_Letter]:\DPAInstall.exe and click **OK**



Once the drivers are installed, you will be prompted to restart your computer. While your PC is rebooting, continue following the next instructions.

If setup does not begin automatically, use the following sequence for Windows Vista or Windows 7:

Start → All Programs → Accessories → Run → [CD_Drive_Letter]:\DPAInstall.exe and click **OK**



After the drivers are installed, you will be prompted to restart your computer. While your PC is rebooting, continue following the next instructions.

3.2. Connect USB Cable to the DPA and Then to PC

Remove the sticker covering the USB port and connect the USB cable to the DPA and PC. The USB cable that comes with the DPA 4 Plus has ears that allow the cable to be screwed into standoff screws on the DPA 4 Plus frame, greatly reducing the chance of breaking the USB connector on the DPA circuit board.



3.3. Connect Vehicle-Side Cable to the DPA

Connect the vehicle-side cable to your DPA. **Do not connect to vehicle first! Pins 6 and 8 on the DB15 connector are power and ground and can arc if not careful!**



Example: 6-pin/9-pin Deutsch Y Cable

3.4. Connect Vehicle-Side Cable to the Vehicle

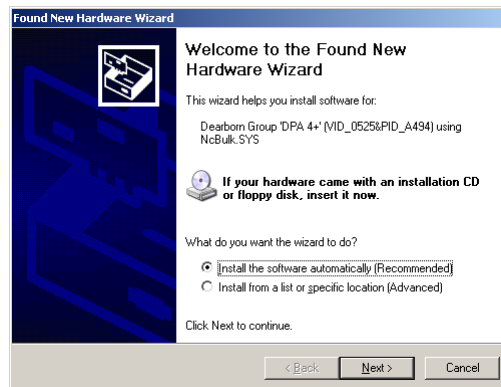
Now, connect the DPA to the vehicle, verifying that the DPA Power LED is lit.

4. Finalize PC Install (Step 5 of 6)

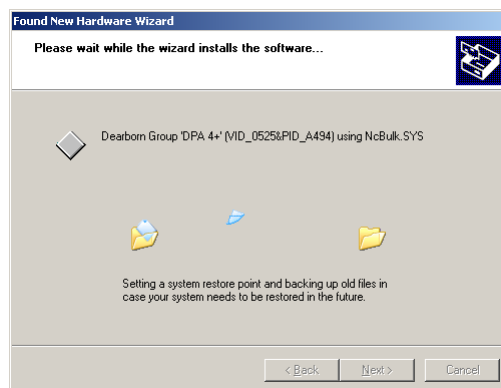
This step differs depending on which version of the Microsoft Windows Operating System (OS) you are installing on.

4.1. Step 5. Finalize PC Install (Windows 2000/XP)

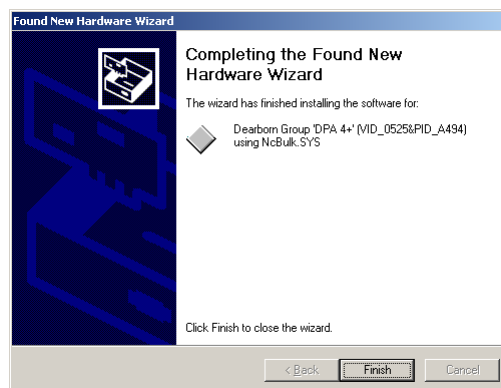
In some versions of Windows the final step in driver installation is automatic. In others, the Windows Found New Hardware Wizard will run to finalize driver installation. What appears in Windows XP is shown below.



Select **Install the software automatically (Recommended)** and press the **Next** button.



This screen appears while Windows installs the drivers.



This screen appears when Windows has finished installing the drivers. Press the Finish button. Your DPA drivers have been installed successfully.

4.2. Step 5. Finalize PC Install (Vista and Windows 7)

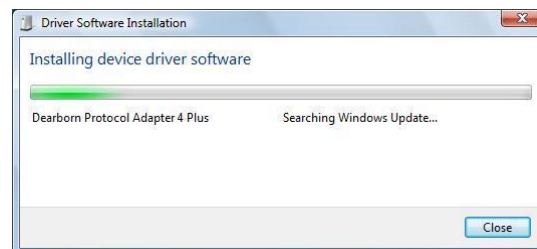
4.2.1. 64-bit Vista and Windows 7 New Hardware Found Wizard

When installing on Vista or Windows 7, the Found New Hardware Wizard requires a completely different set of instructions to correctly find the DPA 64-bit drivers. When the DPA is first powered up and connected to the PC, the Vista 64-bit Found New Hardware Wizard will run to start finalizing the driver installation. Follow the same procedure for Windows 7 64-bit. Some versions of these operating systems will automatically install the device drivers, see last screen capture on page 16.

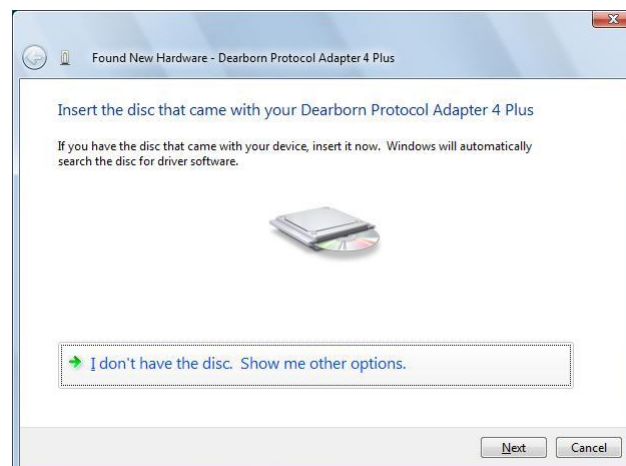


Choose **Locate and install driver software (recommended)**

Windows will attempt to find the device drivers. This next screen will be displayed and may take a few minutes.

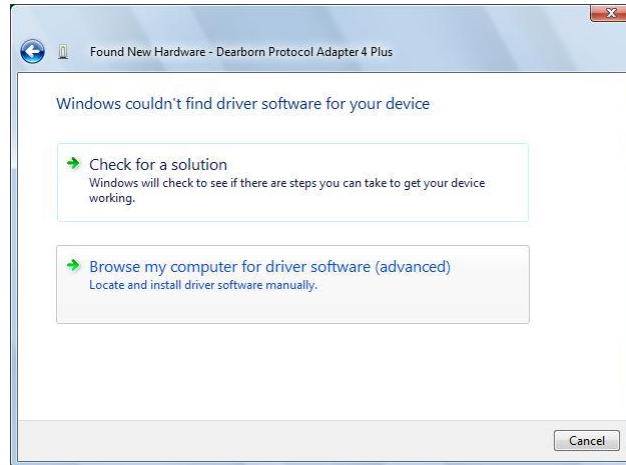


Then, the following screen will be displayed:



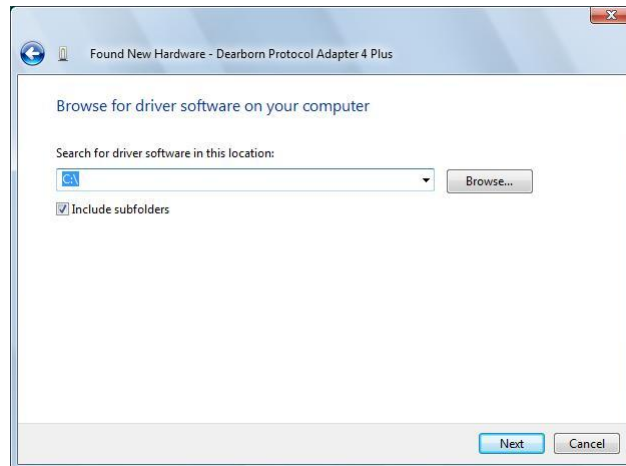
Choose **I don't have the disc. Show me other options.**

The following screen will then be displayed:

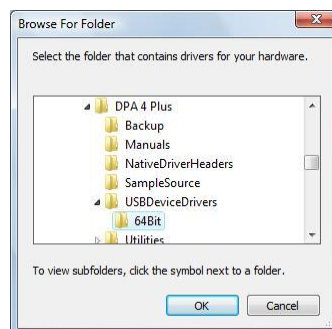


Choose **Browse my computer for driver software (advanced)**.

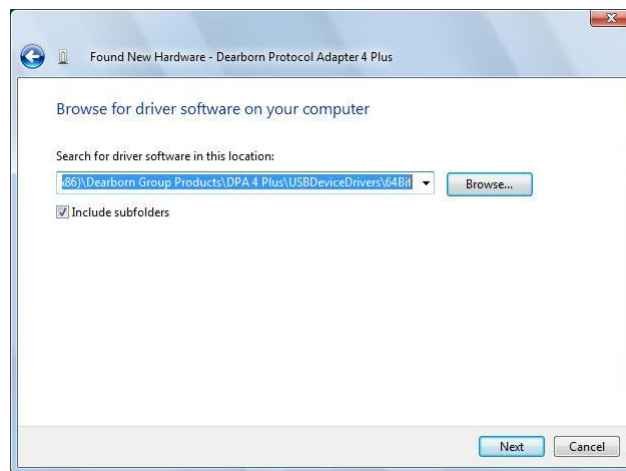
The **Browse for driver software on your computer** dialog will then be displayed.



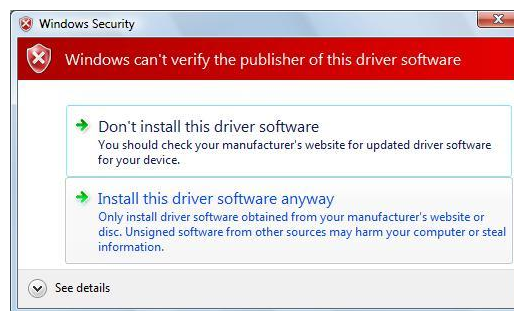
Click the **Browse** button and the **Browse For Folder** dialog appears. Go to the location where you installed the DPA 4 Plus drivers (the default directory for Vista 64-bit is **C:\Program Files (x86)\Dearborn Group Products\DPA 4 Plus**), double click on the **USBDeviceDrivers** folder and then select the **64Bit** folder and press **OK**.



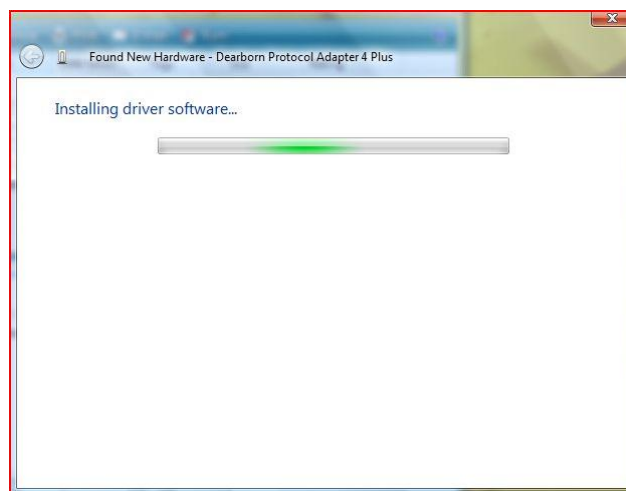
The previous screen remains, but shows the selected directory; click the **Next** button to continue.



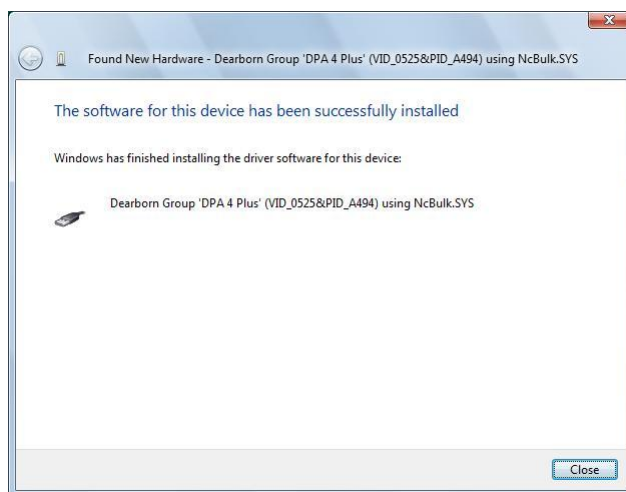
Windows Vista 64-bit will then display the following screen:



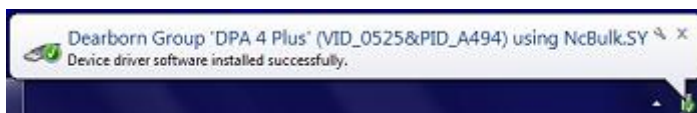
Select **Install this driver software anyway**.



This screen appears as Windows copies driver files and configures the PC.



After Windows has finished adding the device drivers, the following screen indicates success and you will see the next image at the bottom of the Windows taskbar. Press the **Close** button. Your DPA 4 Plus drivers have been installed successfully.



5. Automatic Firmware Update (Step 6 of 6)

When a DPA drivers release is made, a specific set of DPA firmware is validated with that release. The firmware that was validated with each adapter type can be found on the cover page of this manual. DG strongly recommends that users keep their DPA up-to-date with the latest firmware revision.

Automatic Firmware Update is an option that is most likely turned “On” in your installation (the default). Some customers receive special drivers where this is not the case, however this paragraph assumes that this option is turned on, and set to a value of 1. To learn more about this option, see the chapter covering the **DPA Options** program.

After you have finished installing the Windows device drivers you can begin using your DPA. If the Automatic Firmware Update option is on (by default, it is), every time you connect to the DPA, the drivers check to see if a newer version of firmware is available on the hard drive (placed there by a new installation). If a newer version is available the user will be prompted (see Figure 5.1) to upgrade to that version. If the user selects “Yes”, the upgrade process begins automatically. When the upgrade process is complete, the connect sequence for that application will continue. Most applications can handle the delay; however there is a possibility that the user may have to restart their application.

The following is the dialog box that will be displayed if out-of-date firmware is detected.

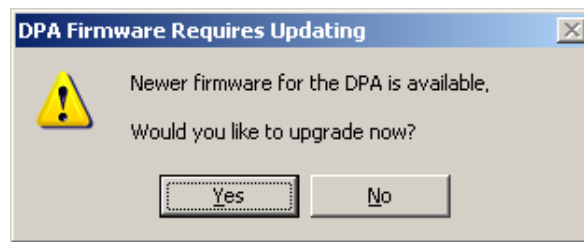


Figure 5.1. DPA Firmware Out of Date Dialog Box

5.1. DPA RF Automatic Firmware Upgrade

The DPA RF Remote unit is upgradeable; however the DPA RF Base unit is not. The DPA driver will not automatically upgrade a DPA RF Remote unit if it is being communicated to wirelessly. If the DPA RF Remote unit firmware is out of date and the user connects using a **wireless** device entry, (i.e. **DG DPA RF Remote,COM1**), the following dialog box is displayed.

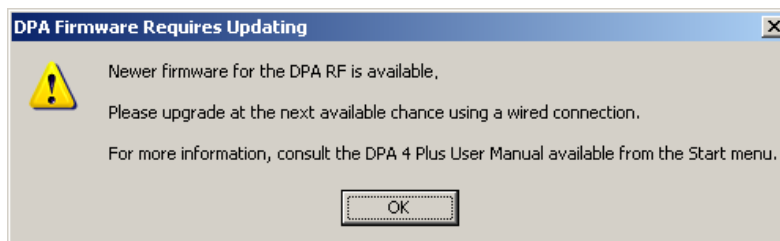


Figure 6.2. DPA RF Remote Unit Firmware Out of Date Dialog Box

To upgrade your DPA RF Remote follow these steps:

1. Connect the DPA RF Remote unit directly to the COM port of your PC using a serial cable.
2. Power the DPA RF Remote unit using the vehicle cable connected to the DB15 female connector on the DPA. You cannot reprogram the firmware of the DPA using the round barrel connector.
3. Connect to the DPA RF using any application (i.e. DG Adapter Validation Tool - AVT) and a **non-wireless** device entry, (i.e. **DG DPA RF Direct,COM1**).
4. You will then receive the dialog box in Figure 6.1 which will allow you to upgrade the firmware.

6. Setting Up Your OEM Applications to Use the DPA 4 Plus

The DPA works with all completely RP1210A compliant applications that support J1708/J1587, J1939, CAN, and J1850 protocols. The DPA also works with other applications that were written to use non-RP1210-compliant native drivers for other protocols, such as GM UART. This section shows how to configure the most common diagnostic applications to work with the DPA.

6.1. Notes on Selecting an RP1210 Compliant Adapter

Selecting an RP1210 adapter (commonly referred to as a Vehicle Datalink Adapter or VDA) varies widely from application to application; however, the terminology remains pretty much the same. The following table helps to introduce you to the terminology and helps you to make the correct selections the first time.

You must configure every OEM application to use the DPA or that application will not work!!!

If You See These Terms	Select This
Vendor API DLL Manufacturer Adapter Manufacturer	Dearborn Group RP1210A or DG121032
Device Device Name Adapter Name	DG DPA 4/4 Plus USB DG DPA 4/4 Plus USB, USB
Device Number	150
Port COM Port Communications Port	USB
Protocol (Depends on Application)	Most Commonly Encountered: ✓ J1708 ✓ J1939

6.2. Allison DOC

1. Start program
2. Click **Connect to Vehicle**
3. Select the correct transmission type
4. Uncheck **Smart Connect**
5. Click **Connect**
6. Click **Advanced Setup**
7. Select vendor of **Dearborn Group RP1210A**
8. Select protocol of **J1939** or **J1708**
9. Select correct device of **DPA 4/4 Plus USB**
10. Click **OK**

6.3. Bendix ABS Diagnostics

NOTE: DO NOT RUN Bendix ABS Diagnostics until you have done the following:

1. Start program
2. If **Diagnostic Interface Selection** dialog box does not appear, click on **Vehicle Interface Adapter** icon
3. Select **RP1210A Device Using J1708 Line: DPA 4/4 Plus USB**
4. Click **OK**

A screen appears indicating that device selection was a success.

6.4. Caterpillar Electronic Technician

1. Start program
2. Click Utilities → Preferences → Communications from the menu bar
3. Click on **Communication Interface Device** dropdown box
4. Select **RP1210 Compliant Device**
5. Click **Advanced**
6. Select (**DPA 4/4 Plus USB**) in the RP1210 Communication Adapter Device box
7. Click **OK**
8. Check **Enable Dual Data Link Service**
9. Click **OK**

6.5. Cummins Insite

1. Start program
2. Click on File → Connections → Add New Connection from the menu bar
3. Click **Next**
4. Click radio button for **RP1210A** and click **Next**
5. Select correct device (**DPA 4/4 Plus USB**), and protocol you want to use, J1708/J1939
6. Click **Next** and a **Connection Name** screen appears
7. Click **Next** and a screen prompts you to indicate whether you want to make this connection active or set up another connection
8. Click on **make this connection active**
9. Click **Finish**

6.6. Detroit Diesel Diagnostic Link V7

6.6.1. From Windows Start Menu

1. Start → Programs → Detroit Diesel → Diagnostic Link → SID configure
2. Select **DPA 4/4 Plus USB**
3. Click **OK**

6.6.2. From Inside DDDL

1. Tools → Options → Connections Tab → SID Configure from the menu bar
2. Select **DPA 4/4 Plus USB**
3. Click **OK**

6.7. Eaton ServiceRanger 3.x

1. Start program
2. Click Tools → Settings → Connection from the menu bar
3. Under Driver choose **Dearborn Group RP1210A**
4. Select **DPA 4/4 Plus USB** for both the J1708 and J1939 device
5. Click **OK**

6.8. Freightliner ServiceLink

1. Start program
2. From the top menu bar, choose **Admin**
3. From the left menu bar, choose **Vehicle**
4. Click on **Show All Devices**
5. In the Vendor box, choose **Dearborn Group RP1210A**
6. Select **DPA 4/4 Plus USB** in the J1708, J1939, and CAN dropdowns
7. Click **Save Settings**

6.9. International Truck and Engine

6.9.1. Master Diagnostics (MD Fleet)

File → MD Settings → COM Device → Window with general VDA selection
Dearborn Group RP1210A → Window with specific port **DPA 4/4 Plus USB**

6.9.2. Navistar Hyd ABS

File → Hydraulic ABS Settings → COM Device → Window with general VDA selection
Dearborn Group RP1210A → Window with specific port **DPA 4/4 Plus USB**

6.9.3. Navistar IPC

File → Settings → COM Device → Window with general VDA selection
Dearborn Group RP1210A → Window with specific port **DPA 4/4 Plus USB**

6.9.4. Diamond Logic Builder (DLB)

Tools → Select Com Link → Listing of adapters **Dearborn Group RP1210A** → Listing of ports **DPA 4/4 Plus USB**

6.9.5. Service Assistant (The new MD Fleet)

1. Press the third button from the top along the left side (has an icon that looks like a miniature interface cable)
2. A window comes up that says Communication Device Selection
3. Box 1 is device selection **Dearborn Group RP1210A**
4. Box 2 is Device ID **DPA 4/4 Plus USB**

6.10. Meritor-WABCO ABS Toolbox

1. Start program
2. Click **System Setup**
3. Select **COM Port**
4. Select **Dearborn Group RP1210A**; the protocol to use is J1939 or J1708
5. Select **DPA 4/4 Plus USB** and click **OK**

6.11. Volvo/Mack VCADS Pro

6.11.1. From Initial VCADS Setup

1. When prompted to configure a **Communication Unit**, instead of the “9998555” or “88890020” entries, select **RP1210A adapter**
2. When prompted for the adapter, select **DPA 4/4 Plus USB**
3. Select **USB** for the Port
4. Select **J1708** for the protocol
5. When prompted for the Electrical Systems
 - a. Click **Volvo Trucks – VERSION2** and select **RP1210A Adapter**
 - b. Click **Volvo Trucks – Vehicle electronics ‘98’** and select **RP1210A Adapter**
 - c. Click **Mack Trucks – V-MAC I/II/III, ITC** and select **RP1210A Adapter**
 - d. Click **Volvo Trucks – V-MAC IV** and select **RP1210A Adapter**
6. Continue with installation

6.11.2. From Inside VCADS

1. Start program
2. Click the Tools → Options from the menu bar
3. Select the **Comm. Unit Configuration** tab
4. Select **RP1210A Adapter** and then select **DPA 4/4 Plus USB**
5. Select **USB** for the Port
6. Select **J1708** for the protocol
7. Go to the **Comm. Unit Selection** tab
 - a. Click **Volvo Trucks – VERSION2** and select **RP1210A Adapter**
 - b. Click **Volvo Trucks – Vehicle electronics ‘98’** and select **RP1210A Adapter**
 - c. Click **Mack Trucks – V-MAC I/II/III, ITC** and select **RP1210A Adapter**
 - d. Click **Volvo Trucks – V-MAC IV** and select **RP1210A Adapter**
8. Click **Ok**

6.12. Volvo/Mack Premium Tech Tool (PTT)

1. Select PTT → Settings from the menu bar
2. Select **Communication Unit configuration** tab. It is here that you select the settings for each adapter that you may use. For example, if you have an RP1210A adapter, it is here that you select which adapter, port, and protocol. NOTE: This identifies the settings for each adapter. It does not select which adapter the PTT application will use to communicate with the vehicle.
3. **Comm unit selection** tab: It is here that you identify which adapter is to be used by the PTT application to communicate with the vehicle. You may have to change this selection depending upon the vehicle. For example, if you typically use an 88890020 adapter in direct mode, when you need to communicate with an older vehicle you will need to change to RP1210A adapter or the 9998555 adapters, depending upon the vehicle.

7. Troubleshooting/Validating Your DPA Using Adapter Validation Tool (AVT)

There are typically three problem areas with VDA devices. Each problem is discussed in the following sections:

1. Connection related – unable to communicate with the adapter, vehicle, or both.
2. Inability to select the adapter in your OEM diagnostic application.
3. USB Issues.

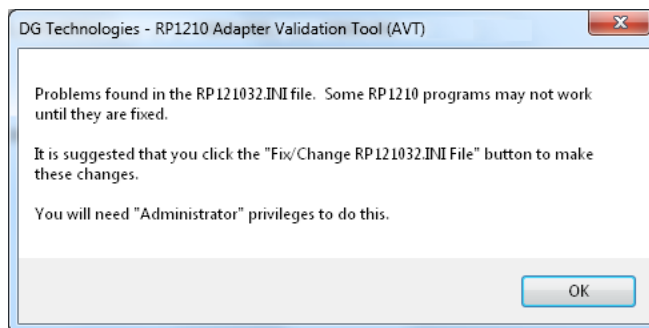
7.1. Connection-Related Issues

After you have installed the DPA drivers and connected the DPA to both the PC and vehicle, make sure that the **Power** LED is turned on. Run the DG Adapter Validation Tool (AVT) to ensure that the PC is able to communicate with the DPA, and that the DPA is able to see vehicle data bus traffic.

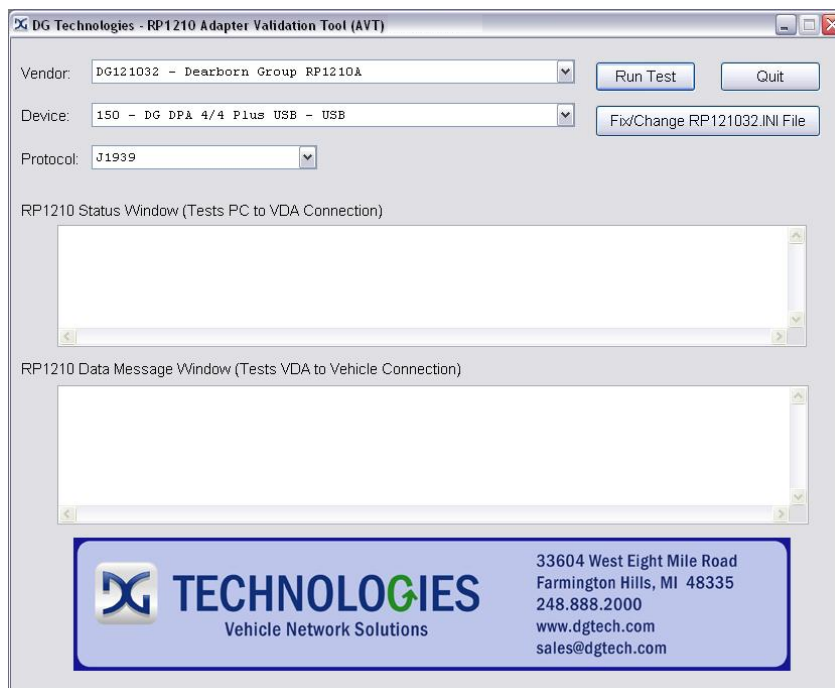
Start → Programs → Dearborn Group Products → DPA 4 Plus → Adapter Validation Tool

When the Adapter Validation Tool software is launched, you will be told if a problem exists in the main RP121032.INI file. If you wish to fix this issue, press the **Fix/Change RP121032.INI File** button. Windows Vista/Windows 7 users will be prompted for administrator privileges.

The following is the dialog box that will appear if a problem is found.



If there is not a problem in the RP121032.INI file, the following dialog box will be displayed.



Select the correct DPA adapter:

- ☐ **Vendor** DG121032 – Dearborn Group RP1210A
- ☐ **Device** 150 – DG DPA 4/4 Plus USB - USB
- ☐ **Protocol** J1708, J1850, CAN or J1939 (depending on your vehicle/equipment)

Then click the **Run Test** button. Depending on the results of the test, both the **RP1210 Status Window** and **RP1210 Data Message Window** will turn **green** (pass) or **red** (fail).

7.1.1. AVT Test Outcomes

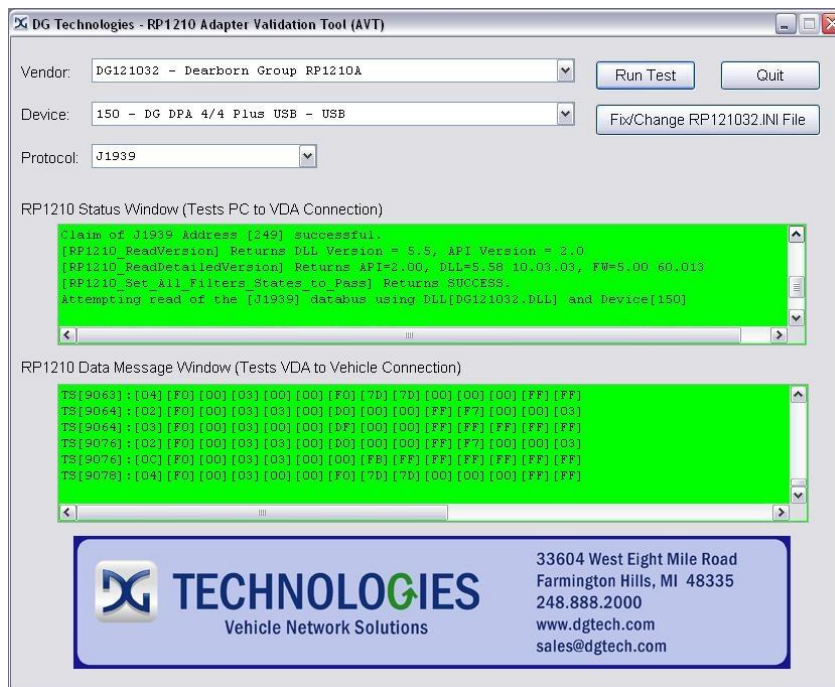
If the **RP1210 Status Window** turns red, then there is a problem with something causing the PC not to communicate with the adapter. This may be something as simple as having power to the adapter or having a USB cabling issue. Disconnect the adapter from the vehicle and PC; then reconnect them, this time connecting to another USB port on the PC.

If the **RP1210 Status Window** turns green and the **RP1210 Data Message Window** turns red, then the PC is seeing the adapter, but not seeing messages from the vehicle. Check the vehicle ignition switch and vehicle to adapter cabling; disconnect the adapter from the vehicle and PC; then reconnect them.

If you see data in the **RP1210 Data Message Window**, then the adapter is installed and functioning properly.

If after following the **Test Results Discussion and Next Steps** screen, you cannot get the adapter to read data, contact DG technical support.

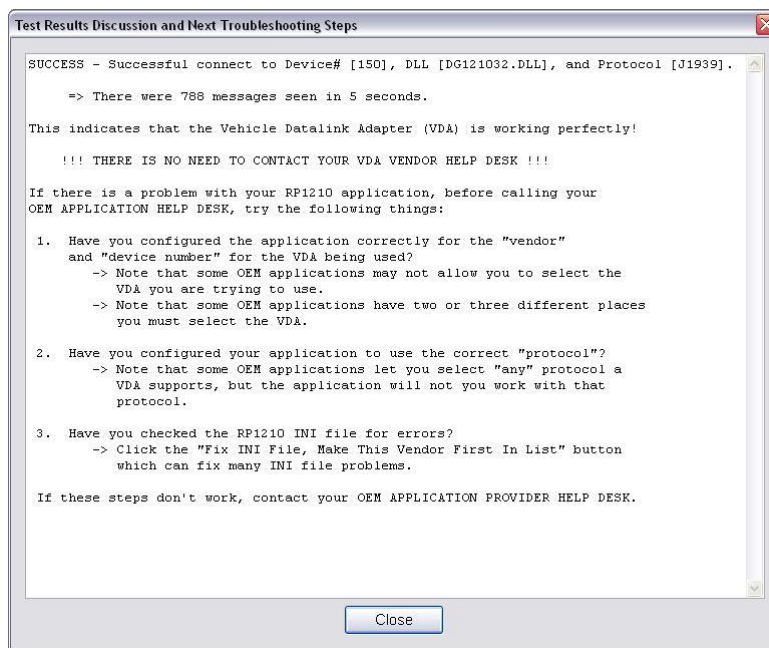
7.1.2. Good Connection (PC to DPA), Good Read of Data (DPA to Vehicle)



Screen snapshot showing the PC successfully connecting to the DPA 4 Plus and reading of vehicle data bus data.

7.1.3. Test Results Discussion and Next Steps

Once the test is complete, the application will display an informational screen listing some steps to correct the issues based upon what the results of the test were. If one of the windows turned red, then read the instructions carefully to see if you can determine where the source of the problem is.



7.2. Not Seeing DPA 4 Plus in OEM Application VDA Selection List

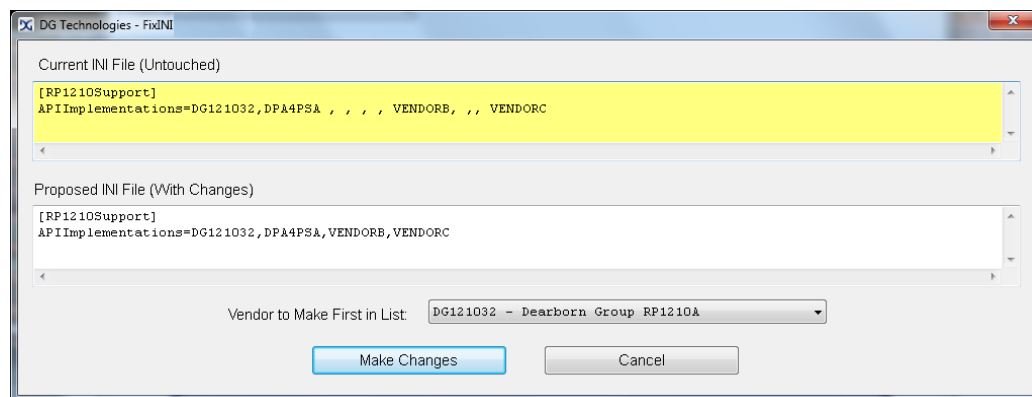
If you have installed the DPA 4 Plus drivers, and your diagnostic application does not display **DG DPA 4/4 Plus USB** in their VDA selection dialog box, this could indicate one of three things about the diagnostic application. Most oftentimes, item #3 is the main culprit, and has been causing problems for several years.

1. Application is not RP1210A compliant and does not work with the DPA 4 Plus.
 - a. Some applications require a specific, proprietary adapter.
2. Application is RP1210A compliant, but DPA does not support the protocol needed.
 - a. For example, ISO9141 in the RP1210 layer.
3. Problem with the main RP121032.INI file, typically C:\Windows\RP121032.INI.
 - a. Some VDAs create issues with the RP121032.INI file when they install/uninstall.
 - b. You will be notified by a dialog box when you run AVT if there is a problem. If so, you should fix the problem. On Windows Vista, you will be required to have administrator privileges.

The AVT application has a button **Fix/Change RP121032.INI File** that will allow you to view and fix the RP121032.INI file if there are errors detected. You can also change the VDA vendor that appears first in the list of the OEM diagnostic software applications.

In the example below, a bad INI file was detected and is depicted by a yellow background. Note the multiple commas and spaces between entries. The user then chose that they wanted DG121032 be the first vendor in the list. Click the **Make Changes** button and the INI file problem will be corrected.

NOTE: Many OEM diagnostic applications are aware of this issue and can read through the errors.

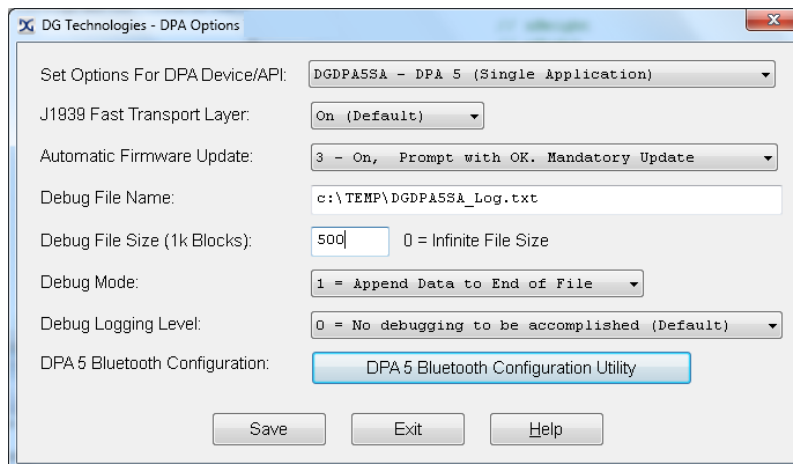


7.3. USB-Related Issues

If you plug in a DPA (or any other USB device) and get the New Hardware Found wizard, do not click cancel. Go through the wizard completely! **IF YOU SELECT Cancel, THE DPA WILL NOT WORK!**

8. Modifying DPA Settings – DPA Options Program

The DPA Options program allows the user to adjust certain parameters pertaining to the DPA drivers.



8.1. DPA Options And DPA Driver “Sets”

Version 2.0 and higher of the DPA Options program adds the capability of modifying the settings for all DPA driver sets that are installed on your computer. Below is a table that briefly describes each driver.

Driver Set	RP1210	Description
DG121032	A	DPA 4, 4 Plus and Prior DPAs (DPA III Plus, DPA RF) Allows only one RP1210 application to run at a time.
DPA4PSA	B	DPA 4 Plus “Only” (Single Application) Allows only one RP1210 application to run at a time.
DPA4PMA	B	DPA 4 Plus “Only” (Multiple Application) Allows more than one RP1210 application to run at a time.
DGDPA5SA	B	DPA 5 “Only” (Single Application) Allows only one RP1210 application to run at a time.
DGDPA5MA	B	DPA 5 “Only” (Multiple Application) Allows more than one RP1210 application to run at a time.

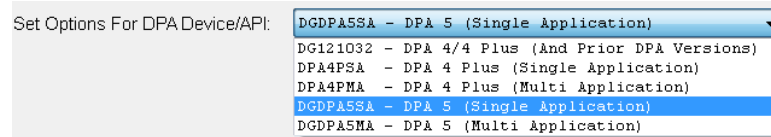
Some fields may not be activated based on the driver set you want to modify. The following table shows what can be modified based on the driver set chosen.

Driver Set	Fast Transport	Automatic Firmware Update	Debug File Name	Debug File Size	Debug Mode	Debug Level	DPA 5 Bluetooth Configuration Utility
DG121032	Y	Y	N	N	N	N	N
DPA4PSA	Y	Y	Y	Y	Y	Y	N
DPA4PMA	Y	Y	Y	Y	Y	Y	N
DGDPA5SA	Y	Y	Y	Y	Y	Y	Y
DGDPA5MA	Y	Y	Y	Y	Y	Y	Y

8.2. Set Options For DPA Device/API

When selecting “DPA Options” from the program menu of an installed DPA driver set, the program should default this field to that particular DPA driver set. Note that you can only modify driver sets that have been installed.

If the driver set you want to modify an option for is not displayed, you can select that DPA driver set with this field.



8.3. J1939 Fast Transport Layer (FAST_TRANSPORT Option)

When this option is in the “On (Default)” position, it significantly decreases reprogramming and reflashing times over the J1939 data bus by reducing the amount of time between J1939 transport protocol (TP) packets (used to break large messages into CAN 8-byte packets for transmitting on the data bus). With this option turned on, however, some PC applications and vehicle controllers may not be able to keep up with the DPA.

This option has long existed, and many OEM and component manufacturers using the DPA for end of line (EOL) programming stations have used it successfully. If you encounter a diagnostic or reprogramming/reflashing application that is having problems with the DPA using the J1939 protocol, we recommend setting this parameter temporarily to the “Off” position and then retrying the application.

This parameter makes little, if any, difference during “standard” diagnostic sessions.

For more detailed information, refer to the DPA Installation and User Manual sections regarding FAST_TRANSPORT.

8.4. Debug Logging Level (RP1210B INI Option “DebugLevel”)

This is an RP1210B introduced INI file option designed to record vehicle data bus data and other pertinent driver data to a text file. Chances are you will never need to use this, DebugFile, DebugFileSize, and DebugMode options unless you are directed by an OEM or Dearborn Group to investigate possible software issues. Potential values for this option are:

- 0 = No Debugging to be Accomplished (Default).
- 1 = Only Connect/Disconnect/Error Messages.
- 2 = Add RP1210_SendCommand Calls.
- 3 = Add all Sent Messages (with Filtering).
- 4 = Add all Received Messages (with Filtering).

Changing this value to something besides 0 (the default) will cause the DPA drivers to start logging DPA driver and vehicle databus data to the “DebugFile” based on the selected value.

8.5. Debug File Name (RP1210B INI Option “DebugFile”)

When “DebugLevel” is on (1-4), this is the file that will receive the data logging output in text format. This file will be in ASCII and can be read using the Windows WordPad or Notepad applications. The default value for this option is in the Windows temporary directory, with the filename of DGDPA5SA_Log.txt.

8.6. Debug File Size (RP1210B INI Option “DebugFileSize”)

When “DebugLevel” is on (1-4), this is how large the “DebugFile” can grow in bytes. The formula is (“DebugFileSize” * 1024), so if you want to allow the “DebugFileName” the ability to grow to 2 megabytes, you would set this value to 2048. The default value for this parameter is 1024, or 1 megabyte.

8.7. Debug File Mode (RP1210B INI Option “DebugMode”)

When “DebugLevel” is on (1-4) and this option is in the 1 (Default) position, the DPA drivers will append data to “DebugFile” (which could have data from previous logging) until it reaches the end of the file (1024 * “DebugFileSize”). When reaching the end of the file, the DPA drivers will erase “DebugFile” and start writing new data to the file.

When “DebugLevel” is on and this option is in the 0 (Overwrite File Contents) position, the DPA drivers will erase “DebugFile” and begin writing data to the file until it reaches the end of the file (1024 * “DebugFileSize”). When reaching the end of the file, the DPA drivers will erase “DebugFile” and start writing new data to the file.

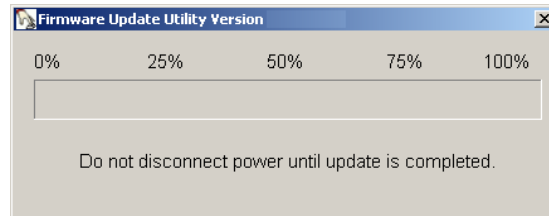
8.8. Automatic Firmware Update

Setting the variable **Automatic Firmware Update** to the **Value** causes the drivers to exhibit the behavior in the **Action** column.

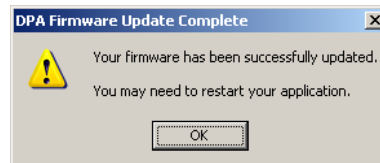
Value	Action
0	Automatic firmware update is turned off. No automatic checking for new firmware.
1	Automatic firmware update is turned on. The user has a choice as to whether or not to upgrade. <div data-bbox="711 919 1006 1039" data-label="Image"> </div> <p>If the user selects “Yes”, the firmware is automatically updated. If the user chooses “No”, then the drivers connect the application to the vehicle. This is the default.</p>
2	Automatic firmware checking is turned on. The user is only told that there is new firmware available and told they should run the DPA Firmware Updater. <div data-bbox="617 1165 1101 1318" data-label="Image"> </div> <p>When the user chooses “Ok”, then the drivers connect the application to the vehicle. The user can then update the DPA at their convenience.</p>
3	Automatic firmware update is turned on. The user is told there is new firmware and the firmware is downloaded automatically as soon as they press the “OK” button. <div data-bbox="690 1438 1031 1575" data-label="Image"> </div> <p>When the user selects “Ok”, the firmware is automatically updated.</p>

8.8.1. When the Drivers Call the DPA Firmware Updater

In the event that the automatic update is chosen, the DPA drivers launch the DPA Firmware Updater, which handles the downloading of new firmware. Once the firmware has started downloading, the user cannot stop it. The following is the dialog box showing the DPA Firmware Updater during an automatic update:



When the update is complete, the following dialog box is displayed and the DPA drivers attempt to let the application that was suspended continue executing. Most applications can handle the interruption; however there is a possibility that the user may have to restart their application.



8.9. DPA 5 Bluetooth Configuration Utility

This button opens the DPA 5 Bluetooth Configuration Utility. This allows the user to create RP1210 DeviceID entries from DPA 5 Bluetooth Pairings. This utility has its own help file.

9. DG Update – Program Overview

DG Update is an application that is installed with your DPA drivers. It will run once a month, and will keep you up-to-date with the latest versions of DPA drivers for all your DPA products. With this application running once a month and Automatic Firmware Update (see DPA user manual) turned on, this will always keep your DPAs up-to-date with drivers and firmware! DG recommends our customers keep up-to-date so that your OEM and component manufacturer diagnostic applications run smoothly.

The utility will runs once every 30 days as a user logs on, or it can be invoked manually from the Windows Start Menu:

Start->Programs->Dearborn Group Products->DPA Utilities->DG Update

9.1. DG Driver Update – Internet Connection Required

The DG Driver Update utility depends on successfully connecting to the Internet (to one of DG's servers) to retrieve the latest version numbers of the DPA drivers, files and firmware, and to download the latest drivers if necessary.

Many companies install firewalls and virus protection and these may block the DG server queries and responses. If you are connected to the Internet and have issues running DG Update (getting "Unable to connect to the internet to check for updates." messages), ensure that your firewall or virus protection will allow a connection to the following Internet host/site and port: **fh.dtech.com, port 8888**. There are too many firewall and virus programs on the market to cover in this manual, however if you contact your network administrator and give him the host and port number, he should be able to configure your PC to allow the communication. You may also consult the Windows help system and/or the documentation for your firewall and/or virus protection software.

Due to the nature of TCP/IP communications, errors connecting or sending/receiving of data are slow to appear, however the user will eventually be notified if there was a problem.

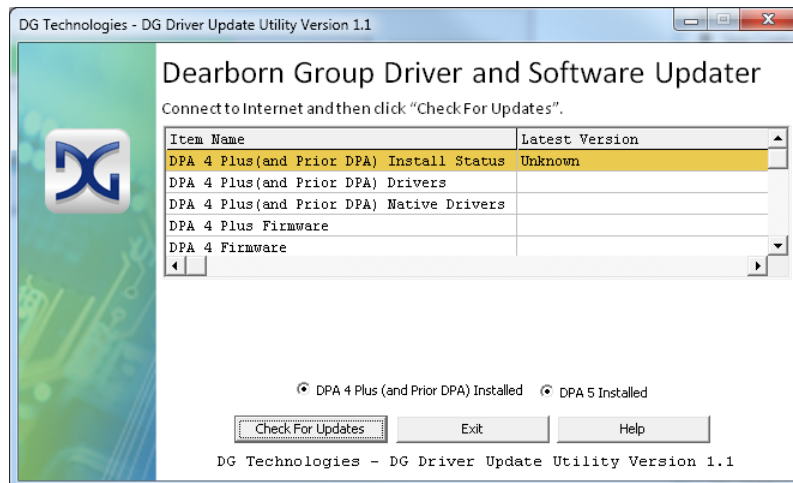
9.2. DG Driver Update – Initial Screen

When the utility runs as a user logs on, the following screen will appear in the lower right hand corner of the screen. If you want to check for updates, ensure that your PC is connected to the Internet and click "Continue". Clicking "Cancel" will cause DG Update to wait another month to run. Clicking "Continue" will bring up the main update screen.



9.1.DG Driver Update – Main Update Screen

The main screen appears looking like this. Depending on which DPA versions are installed on your PC, the grid will display pertinent information about those drivers and firmware. In this case, both the DPA 4 Plus and DPA 5 drivers are installed. When selecting DG Update from the Windows Start Menu, this is the first screen to appear.



Connect your PC to the Internet and click the “Check For Updates” button. Due to the nature of TCP/IP communications, errors connecting or sending/receiving of data are slow to appear, however the user will eventually be notified if there was a problem.

If the check for updates was successful, the second column of the grid will display information returned from the DG server showing the most current versions and the “Install Status” row will change to red, green or blue.

Item Name	Latest Version
DPA 5 Install Status	1.20000-Current

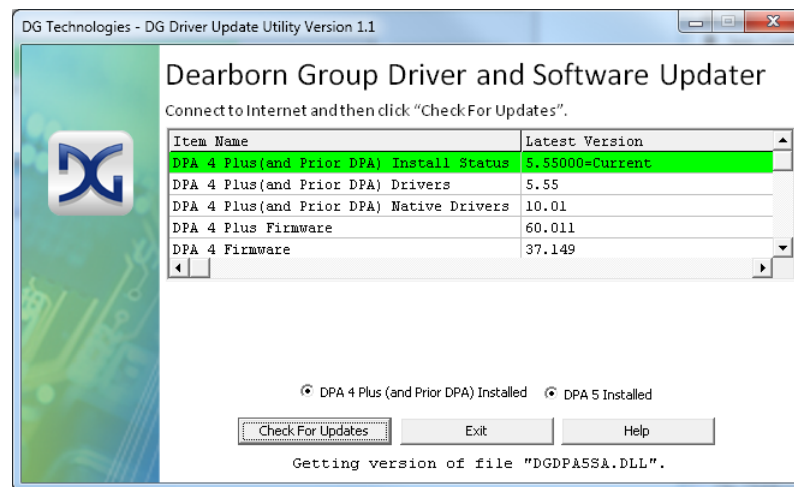
Item Name	Latest Version
DPA 5 Install Status	1.20000-Outdated

Item Name	Latest Version
DPA 5 Install Status	1.20000-Newer (Beta Release)

Note: There are three possible outcomes:

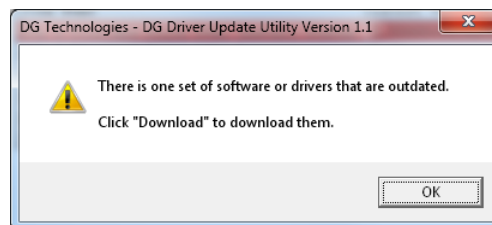
Color	Description
Green	Drivers up-to-date. No update necessary.
Red	Drivers are outdated. Update recommended.
Blue	Drivers on your PC are newer than current version. This usually indicates you are running a “beta” copy of the DPA drivers.

9.1.1. Successful Connect – No Updates Available

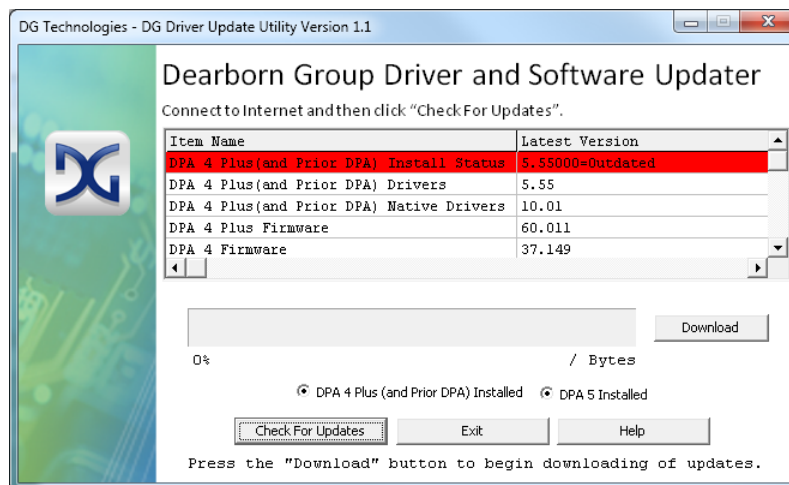


In this case, the DPA 4 Plus drivers are current (green), and the "Download" button and progress bar do not display (see next paragraph). Clicking "Exit" will exit the program and you will be prompted to update in another month.

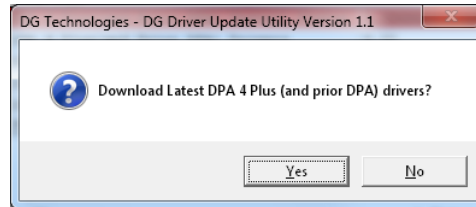
9.1.2. Successful Connect – Updates Available



In this case, the DPA 4 Plus drivers are out of date (red), and the "Download" button and progress bar show up on the screen. The progress bar will keep you informed of the download progress should you choose to download the latest drivers by clicking the "Download" button.

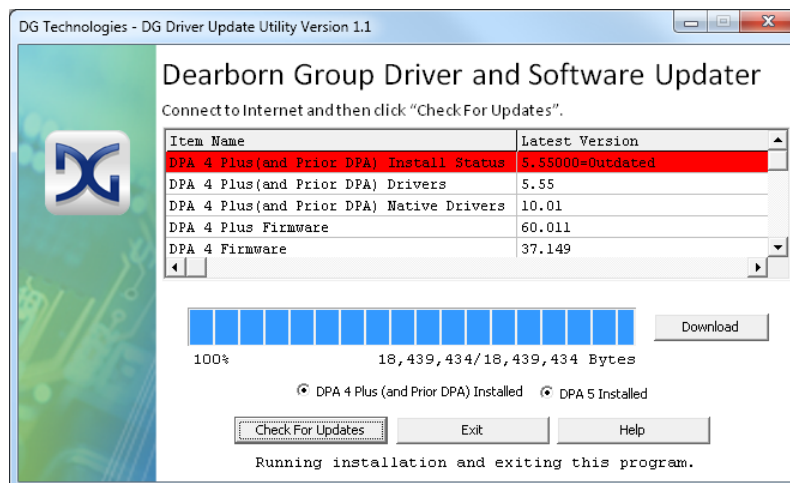


When you click the “Download” button, you will be prompted to confirm starting of the download.



Note: The DG Update application can only download and install one set of drivers at a time. The user will be prompted and can say Yes/No to download whichever one they want to update first. The reason that only one can be downloaded at a time is that after the drivers are unzipped the installation program begins automatically. The DG Update program must exit because the installation program may have a newer version of the DG Driver Update utility to install.

After choosing “Yes”, the program will download the drivers and update the progress bar while doing so.



After the drivers have been downloaded (to the Windows “TEMP” directory – if you wish to save them for other machines), they will be unzipped and the program will exit right after starting the new driver installation. Follow the installation instructions in the appropriate DPA User Manual.

10. Product Specifications

10.1. DPA 4 Plus Physical and Electrical

Feature	Data
Dimensions	6.1 x 2.5 x 1.2 inches
Voltage Requirements	9 – 32 VDC
Current Requirements	250mA max through voltage range
Operating Temperature Range	-40 to +85C
Wired PC Communications Type	USB Version 1.1 or Higher
Wired Connection	Gold-plated USB Cable (up to 15 feet)
Vehicle-Side Connector	DB15 Female
PC-Side Connector	Standard B-Type USB Jack
PC Device Drivers	TMC RP1210A Compliant Drivers DG Native Drivers

10.2. DPA 4 Plus Pinouts

Vehicle-Side Assignments for DPA 4 Plus (DB15 Female).

Pin	DPA 4/4 Plus
Ground	6
Power (9-32vdc)	8
J1708-	14
J1708+	15
CAN1 Shield	7
CAN1 Lo	12
CAN1 Hi	13
CAN1 Term 1*	3
CAN1 Term 2*	4
SW CAN	10
ALDL	1
J1850 Hi	5

* Connecting these two pins (Term1/Term2) applies a 120-Ohm terminating resistor to the CAN/J1939 network.

Pins that are not mentioned are reserved and should not have anything attached to them.

11. Warranty Information and Limitation Statements

11.1. Warranty Information

The DG Technologies DPA 4 Plus is warranted against defects in materials and workmanship for two (2) years following date of shipment. Cables (both USB and vehicle) are warranted for 90 days.

DG Technologies will, at its option, repair or replace, at no cost to the customer, products which prove to be defective during the warranty period, provided the defect or failure is not due to misuse, abuse, or alteration of the product. The customer is responsible for shipment of the defective product to DG. This warranty does not cover damage to any item that DG Technologies determines has been damaged by the customer's abuse, misuse, negligence, improper assembly, modification, or improper operation of the product.

A Return Merchandise Authorization (RMA) number must be issued to the customer by our Technical Support Department at (248) 888-2000 and must be included with the product being returned (for more details, see section *Return Merchandise Authorization (RMA)*). A DPA is warranted for 90 days after a warranty repair, or to end of the original factory warranty period, whichever is longer.

11.2. Limitation Statements

11.2.1. General Limitation and Risk Assignment

To the maximum extent permitted by applicable law, DG Technologies and its suppliers provide support services on an "as-is" basis and disclaim all other warranties and conditions not specifically stated herein, whether express, implied or statutory, including, but not limited to, any warranties of merchantability or fitness for a particular purpose, lack of viruses, accuracy or completeness of responses, results, lack of negligence or lack of workmanlike effort, and correspondence to description. The user assumes the entire risk arising out of the use or performance of the device, its operating system components, and any support services.

11.2.2. Exclusion of Incidental, Consequential and Certain Other Damages

To the maximum extent permitted by applicable law, in no event shall DG Technologies or its suppliers be liable for any special, incidental, indirect or consequential damages whatsoever, including but not limited to: damages for loss of profit, loss of confidential or other information; business interruption; personal injury; loss of privacy, failure to meet any duty (including good faith or of reasonable care); negligence; and any other pecuniary or other loss related to the use of or the inability to use the device, components or support services or the provision of or failure to provide support services or otherwise in connection with any provision, even if DG Technologies or any supplier has been advised of the possibility of such damages.

11.2.3. Limitation of Liability and Remedies

Notwithstanding any damages that you might incur for any reason whatsoever (including, without limitation, all damages referenced above and all direct or general damages), in no event shall the liability of DG Technologies and any of its suppliers exceed the price paid for the device. The user assumes the entire risk and liability from the use of this device.

11.2.4. Right to Revise or Update without Notice

DG Technologies reserves the right to revise or update its products, software and/or any or all documentation without obligation to notify any individual or entity.

11.2.5. Governance

The user agrees to be governed by the laws of the State of Michigan, USA, and consents to the jurisdiction of the state court of Michigan in all disputes arising out of or relating to the use of this device.

11.2.6. Contact

Please direct all inquiries to:

DG Technologies
33604 West Eight Mile Road
Farmington Hills, MI 48335
Phone (248) 888-2000
Fax (248) 888-9977

12. Technical Support and Return Merchandise Authorization (RMA)

12.1. Technical Support

For users in the United States, technical support is available from 9 a.m. to 5 p.m. Eastern Time. You may also fax or e-mail your questions to us. For prompt assistance, please include your voice telephone number.

Users not residing in the United States should contact your local Dearborn Group representative.



DG Technologies Technical Support

Phone: (248) 888-2000
Fax: (248) 888-1188
E-mail: techsupp@dgtech.com
Web site: www.dgtech.com

12.2. Return Merchandise Authorization (RMA)

If technical support has deemed that there may be a physical problem with your DPA, you will be issued you an RMA number. You would then return the product along with any documentation of ownership you have (proof of purchase/price) to the following address:



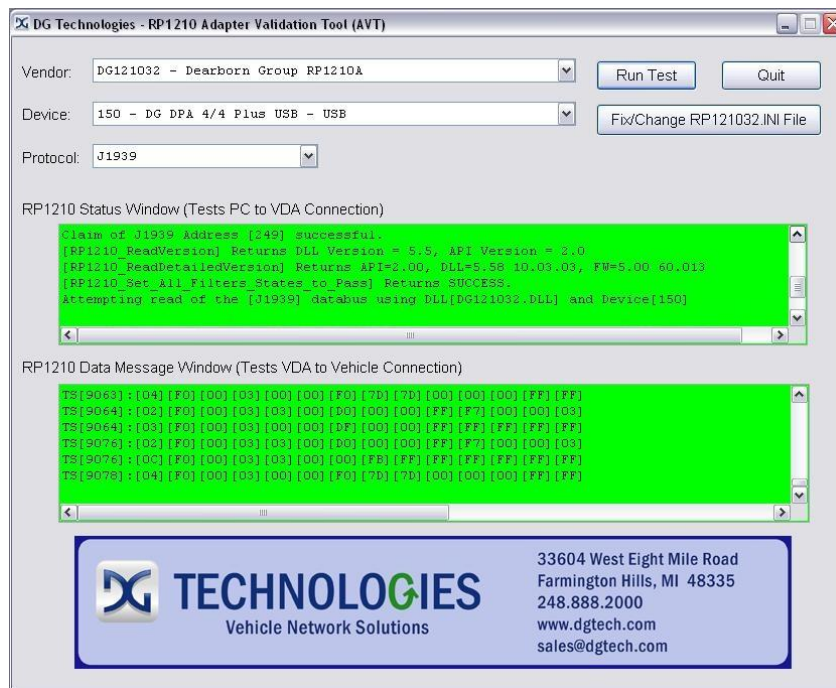
Product Service/Repairs
Attn: RMA# xxxxxxx
DG Technologies
33604 West 8 Mile Road
Farmington Hills, MI 48335

13. Appendix A – Manually Updating DPA Firmware

With the **Automatic Firmware Update** variable set to “1” (default), you will probably never need to do a manual update of firmware unless specifically called on by DG technical support. However, if you have to do a manual firmware update, follow the instructions below.

To find which version of firmware you have, use the Adapter Validation Tool after connecting the DPA to a power source.

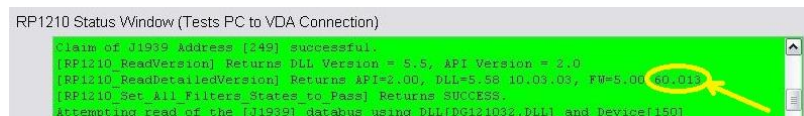
Start → Programs → Dearborn Group Products → DPA 4 Plus → Adapter Validation Tool



Select the correct DPA adapter:

- ☐ **Vendor** DG121032 – Dearborn Group RP1210A
- ☐ **Device** 150 – DG DPA 4/4 Plus USB – USB
 - Or the correct adapter (i.e. DPA III Plus – COM1)
- ☐ **Protocol** J1708 (any protocol works)

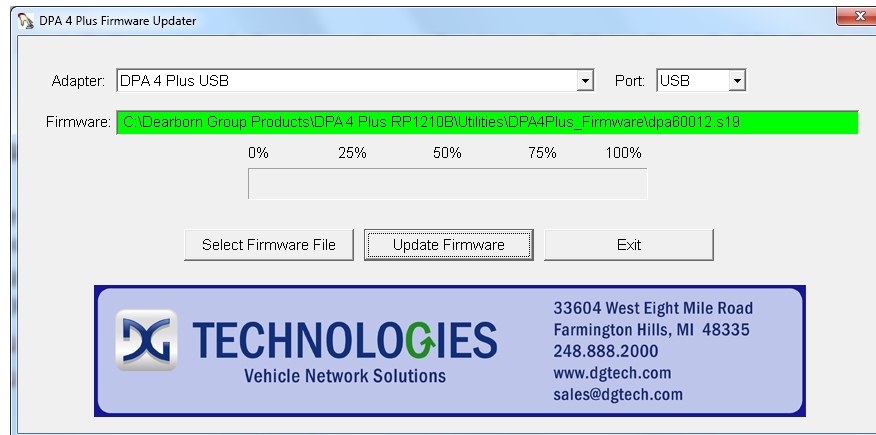
Then click the **Run Test** button. When the test has finished running, go to the **RP1210 Status Window** and scroll down to the line that reads [RP1210_ReadDetailedVersion] and look for the entry “FW=”. The last numbers on the line indicates which version of firmware you have (note the yellow circle). If you are not at the latest (see cover page of this manual), then you need to run the DPA Flash Updater outlined in the following steps.



13.1. Launch the DPA Flash Updater Program

1. Stop all applications that are using the DPA (if any).
2. Start the DPA Flash Updater program:

Start → Programs → Dearborn Group Products → DPA 4 Plus → DPA Firmware Updater



3. Select **DPA 4 Plus USB** with Port **USB** (already selected by default).
4. Select the correct firmware file (the latest version is already selected by default). If the firmware file exists, the Firmware box will turn **green**.
 - a. NOTE: Firmware files are located in separate sub-directories under the Utilities directory where the DPA drivers are installed, typically:
 - ❑ C:\Program Files\Dearborn Group Products\DPA 4 Plus\Utilities\DPA4Plus_Firmware
 - ❑ C:\Program Files\Dearborn Group Products\DPA 4 Plus\Utilities \DPA4_Firmware
5. Click on the **Update Firmware** button and select **Yes** if you receive a warning dialog.
6. After the download is finished, disconnect power from the DPA, wait 5 seconds and then reconnect power.

14. Appendix B – Software Developer/Integrator Notes

This section is relevant only to software development engineers and systems integrators.

14.1. Bundling the DPA with Your OEM Installation – Silent Install

14.1.1. Silent Installation Now Available

Since the 5.50 release, DG has introduced a silent installation that software installation engineers can call that will install all DPA files that would normally be installed by running the installation interactively.

- ❑ The silent installation will not prompt the user or display a screen at any point.
- ❑ After the install, a reboot of the PC is necessary.

14.1.2. Silent Install Command Line

DPAInstall.exe /s /d_SILENT_[components to install]

The [components to install] can be any combination of the following:

- A = Serial DPA III
- B = DPA RF
- C = DPA 4 and DPA 4 Plus USB

Examples:

Silently install serial DPA III drivers:

DPAInstall.exe /s /d_SILENT_=A

Silently install DPA 4 and DPA 4 Plus USB and serial DPA III drivers:

DPAInstall.exe /s /d_SILENT_=CA

Silently install serial DPA III, DPA 4 and DPA 4 Plus USB, and DPA RF drivers:

DPAInstall.exe /s /d_SILENT_=ACB

NOTE: Please test and ensure that the command line you provide to DPAInstall.exe is correct. Otherwise, only the baseline components will be installed, but the RP1210 API will not be functional.

14.1.3. Controlling Automatic Firmware Update Variable on Silent Install

If you are a software development engineer or system integrator and wish to use the silent installation, but you want to change the **Automatic Firmware Update** setting to a value other than “1” (default), you can do so by changing the registry value of the following variable during a post-installation event.

DPA 4 Plus (DG121032)

HKEY_LOCAL_MACHINE\SOFTWARE\Dearborn Group Products\FirmwareUpdater\UpdateFirmware

DPA 4P (DPA4PSA, DPA4PMA)

HKEY_LOCAL_MACHINE\SOFTWARE\Dearborn Group Products\FirmwareUpdaterDPA4P\UpdateFirmware

DPA 5 (DGDPA5SA, DGDPA5MA)

HKEY_LOCAL_MACHINE\SOFTWARE\Dearborn Group Products\FirmwareUpdaterDPA5\UpdateFirmware

This variable is of the REG_SZ data type, however only the first character ('0','1','2','3') is used by the DPA Options program and the DPA drivers.

14.2. Native Driver Device IDs Match RP1210 Device IDs

Many OEM customers use our native drivers to get to protocols not covered under RP1210 (such as GM UART).

DG native driver device identification numbers that are found in the file

C:\Windows\DG_DPA32.INI

will now match our RP1210 device numbers that are found in the file

C:\Windows\DG121032.INI.

NOTE: Device 601 (DPA 4 and DPA 4 Plus USB) which has been hard-coded by numerous applications will be considered an alias for the RP1210 device number 150. We request that in the future you parse the DG_DPA32.INI file to obtain the correct device ID.

15. Appendix C - Windows Vista and Windows 7 Support Notes

Microsoft® has made great strides in updating their operating systems to protect against malicious software. With Windows Vista, Microsoft introduced User Account Control (UAC). UAC strictly enforces the differences between an administrator and a standard user account. When an action that could potentially compromise the PC such as writing files to the C:\Windows directory or registry is requested, the user is prompted for an administrator name and password. If the user is already an administrator, they are still prompted to confirm the action. Generally speaking, whenever you see the Microsoft security shield icon on a button, you will need an administrator's password to perform that operation.

15.1. UAC and the TMC RP1210 Standard

Before Windows Vista, it was common for applications to put INI and other types of configuration files in the default Windows directory, typically C:\Windows. The RP1210A standard requires that the RP121032.INI file be located in this directory, along with all of the vendor INI files (i.e. DG121032.INI). On Windows Vista, this means that a standard user cannot make changes to the main RP121032.INI file, nor can they make changes to the vendor INI files when UAC is enabled.

15.2. UAC and the Dearborn Group Adapter Validation Tool (AVT)

A standard user will be able to run the AVT program and troubleshoot the PC-DPA-vehicle connection, but will not be able to fix a problem in the RP121032.INI file without an administrator password (see section on troubleshooting later in this document). The graphic below is from the Adapter Validation Tool (AVT), showing the Microsoft security shield on the **Fix/Change RP121032.INI File** button.



15.3. UAC and the DPA Options Program

Only an administrator will be able to run the DPA Options program.

15.4. UAC Requirements for All DPA Utility Programs

The DPA utility programs (listed below) have been modified to conform to UAC. The following list shows these programs and privileges required to run them:

Program	Privileges Required	Notes
Adapter Validation Tool (AVT)	Standard User	Administrator needed for Fix/Change RP121032.INI File .
DPA Options	Administrator	
DG Diagnostics	Standard User	Cannot save/record data bus files to a protected directory.
DPA Firmware Updater	Standard User	
Sample Source Code	Standard User	

15.5. More Information on UAC

For more detailed information on UAC, there is a helpful article at <http://www.wikipedia.org> or you can go directly to the Microsoft website <http://www.microsoft.com> and search for "UAC".